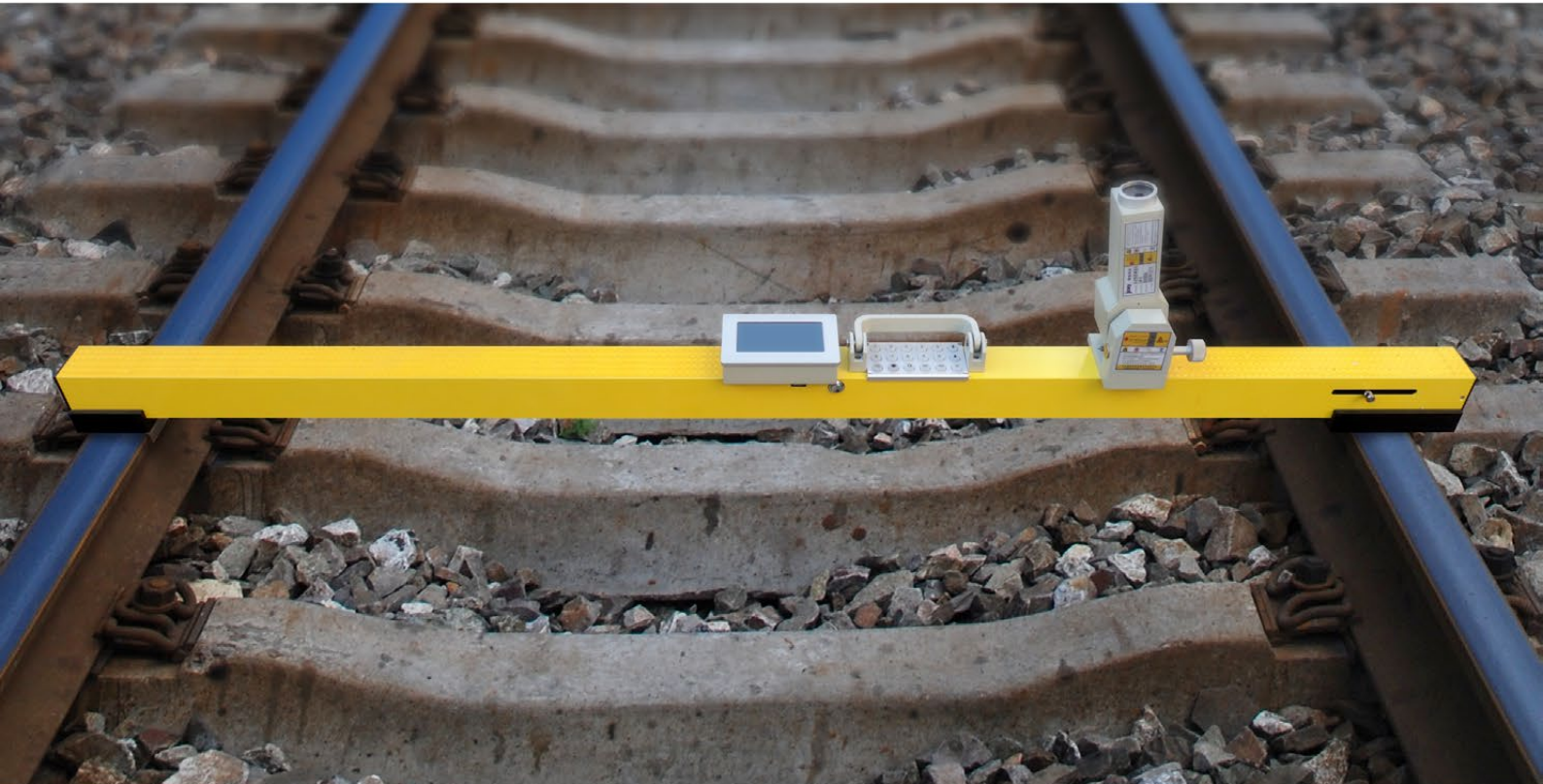
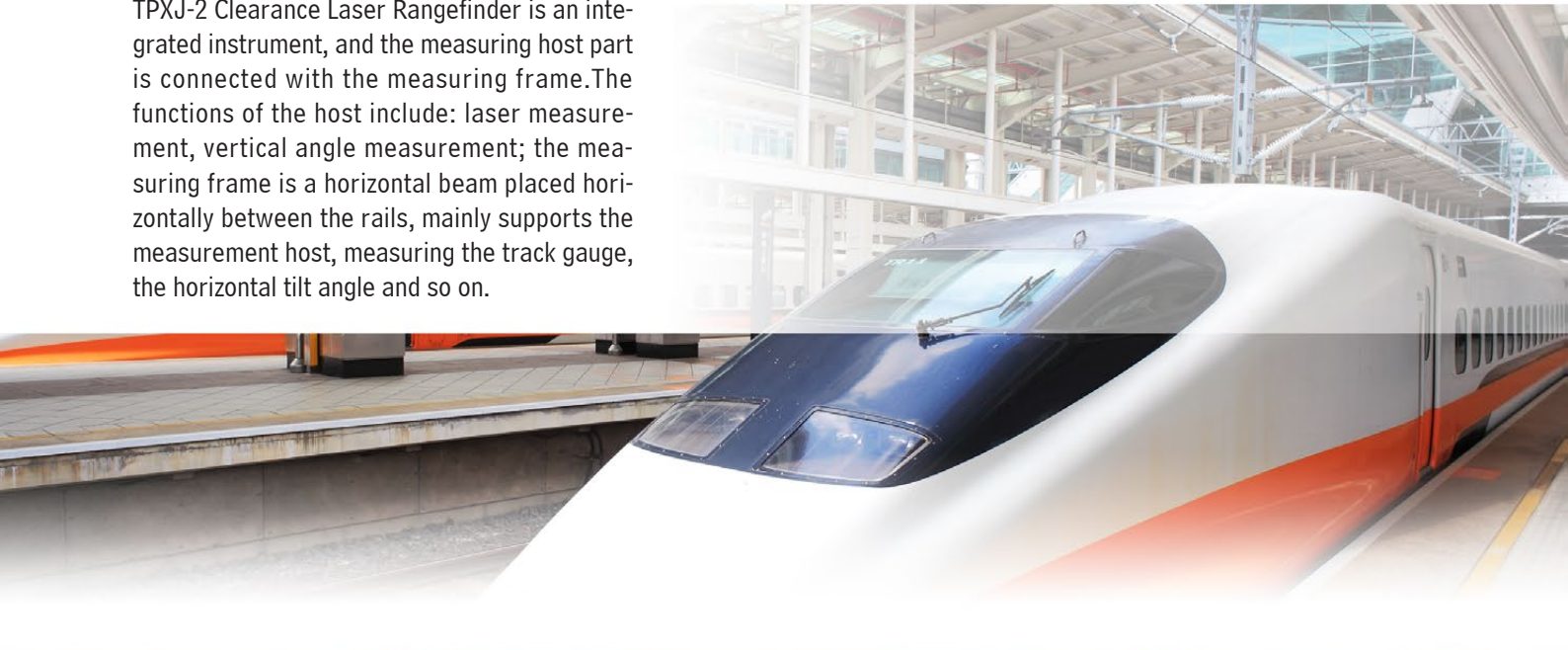


## OVERVIEW

TPXJ-2 Clearance Laser Rangefinder is an intelligent catenary ranging instrument. The system consists of laser ranging, grating angular and track gauge measuring module and horizontal measuring module. This device integrates laser non-cooperative target ranging technology, two-dimensional coordinate measuring system of grating angle measurement technology and sensor information fusion technology etc. It provides a perfect solution for the construction of digital management platform of catenary parameters, the erection and "Condition Based Maintenance" of catenary of electrified railway.

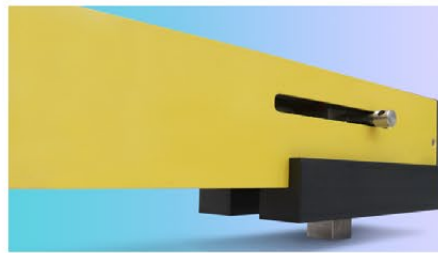
TPXJ-2 Clearance Laser Rangefinder is an integrated instrument, and the measuring host part is connected with the measuring frame. The functions of the host include: laser measurement, vertical angle measurement; the measuring frame is a horizontal beam placed horizontally between the rails, mainly supports the measurement host, measuring the track gauge, the horizontal tilt angle and so on.



## MAIN TECHNICAL PARAMETERS

### WORKING CONDITION

Working temperature	-20~+50 C
Related humidity	≤90%RH
Altitude	≤2500m



### TECHNICAL SPECIFICATION

	Range	Accuracy
Track gauge	1410~1470mm	2mm
Super-Elevation(horizontal)	-200~+200mm	3mm
Horizontal distance of the measured point from the center of the track (clearance)	240~10000mm	±1mm
Height of the measured point relative to the rail plane (cable height)	0~10000mm	±1mm
The vertical height of the measured point from the center of the track	0~10000mm	±1mm

### ELECTRICAL PARAMETERS

Voltage	12V
Electric current	500mA
Continuous working time	no less than 12 hours
Laser wavelength	650nm

### MECHANICAL PARAMETERS

Weight	4.5Kg
Dimension	1620(L)x160(W)x175(H)mm

