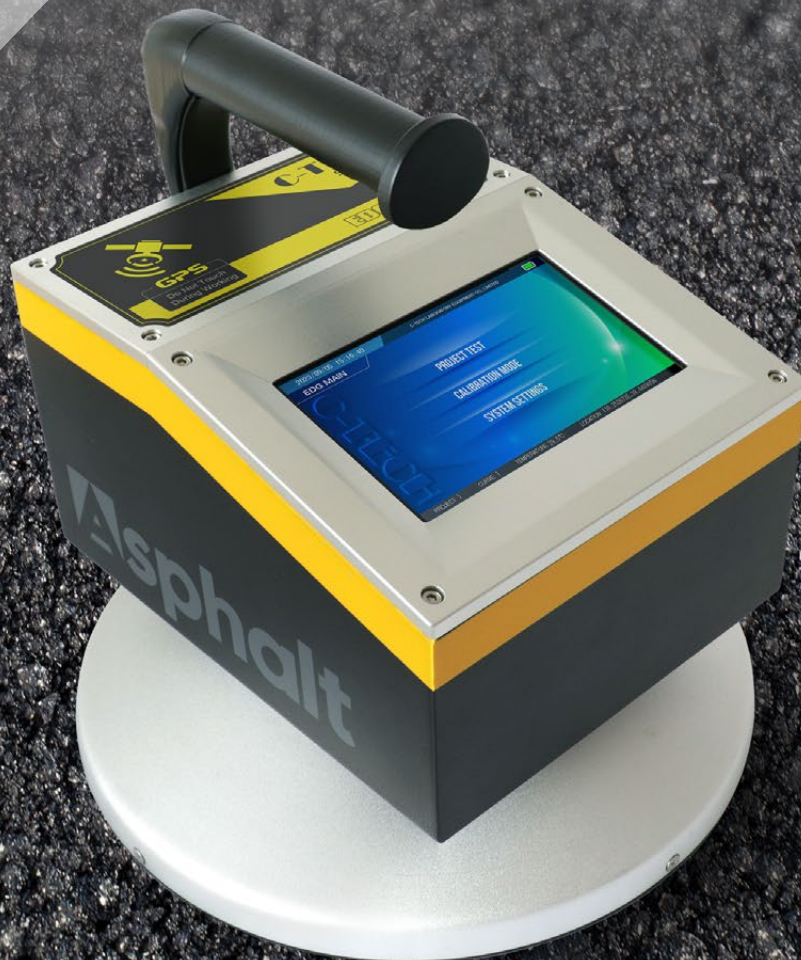


NON-NUCLEAR ASPHALT DENSITY GAUGE EDG-A200

- Full color graphics driven user interface, touch screen operation, easy to use.
- New status bar feature, displays GPS status, data save status, available battery voltage, low battery status and date and time
- New data management feature, quickly access, download or delete your project data
- Ability to download files from the EDG-A200 via USB drive
- Fast, reliable, accurate material density and compaction test, and repeatable readings in real time, user friendly, cost effective
- No other method of calibration is required, and on-site testing can be performed directly. You can read the data accurately in three seconds, with higher precision and better stability.
- Non-Nuclear means no badges, licenses or storage and transport concerns

EDG-A200



SINCE 2006

ZHUOZHOU TIANPENG INSTRUMENT MANUFACTURING CO., LTD.
Website: www.testmould.com Tel: +86-312-3852880

NON-NUCLEAR ASPHALT DENSITY GAUGE EDG-A200



OPERATIONAL SPECIFICATIONS

MODES

Single: Reading time less than five (5) seconds. Stores Data.

Average: Averages five (5) readings and stores data including date and time. Stores thousands of records.

Continuous: Instantaneous density readings.

FUNCTIONS

Density, % Compaction

Porosity %

Integrated Temperature Sensing: Real time temperature display 0 °C to 350 °C

CALIBRATION MODES

Normal: Correlation offset to cores.

MEASUREMENT SPECIFICATIONS:

Sensing Area: 11 in. (27.9cm) diameter base allows optimum measurement on fine and coarse material types.

Measurement Depth: 110mm

Measurement Display: Density, % Compaction, Surface Temperature, Mix Name & Project Name

MECHANICAL SPECIFICATIONS:

Shipping Weight w/Case: 9.00kg

Shipping Dimensions: 490 × 220 × 390mm

ELECTRICAL SPECIFICATIONS

MICROPROCESSOR CONTROLLED

Battery: 2.5 Amp-hr NiMH, 12V

Recharge Time: 4 hours

Battery charger: 12V Universal AC charge

Computer Ports: 1 USB Port

WARRANTY

Standard: 12 month

Optional Extended Warranty: Customer CarePlan available

OPERATIONAL FEATURES

Status Bar: Displays GPS status, Data Save status, battery voltage, low battery and date and time

Project Details: Stores up to 10 projects with details

Mix Details: Stores up to 20 mixes, details include (MTD, Mix Name, Stone Size, Depth, Offset, Operator Name)

Data Logging: When enabled, stores all measurements taken in single or average modes, **(Status Bar Icon)**

Reports: Easily download data to be imported into Excel

GPS Control: When activated will display latitude and longitude positions, number of satellites the gauge is connected to as well as the UTC date and time, also available in UTM format. GPS information will store with each measurement when **Data Save** and **GPS feature** is enabled, **(Status Bar Icon)**

Update Software: One touch upload of new software using a USB memory stick

Data Management: Quickly access, download or delete your project data

Set Time & Date: Quick time and date setup, MM/D-D/YY and DD/MM/YY formats

Units: Interchangeable settings for Density (kg/m³, lb/ft³), Temp (°C, °F), Depth (in, mm) and Stone Size (in, mm)

Enhanced Customer Support: Diagnostic screen to aid in factory support

User Programmable Target Density: Used for calculating % compaction

EDG-A200 COMPLIES WITH



D7113-05

T 343-12