

STANDARD:

EN 12697-34 ASTM D1559 ASTM D5581 AASHTO T245 NF P98-252-2



The Marshall Stability Tester is used by highway departments, contractors, engineers, testing laboratories and other government agencies to determine the stability and flow value of the bituminous mixture. It can accurately judge the failure point of bituminous mixture to provide a basis for the design of the ratio of bituminous mixture, and can also be used to test the construction quality of asphalt pavements.

The equipment can be used for other related tests by replacing different test fixtures. Touch screen control, simple to operate, real-time data display, and it can be connected to an A4 printer or thermal printer to print test results directly.



FEATURES

- ⊙ Touch screen control and display, can save working parameters, simple to operate.
- ⊙ The data can be displayed in real time during the experiment.
- ⊙ Use high-precision displacement sensors and pressure sensors.
- ⊙ With overload protection function.
- ⊙ Can be connected to A4 printer or thermal printer to print test results.
- ⊙ The base is made of stainless steel.

TECHNICAL SPECIFICATIONS

Model	HTHY-0709	HTHY-0710
Maximum load	50kN	100kN
Stability range	≤40kN, error ≤±0.1kN	0~95kN, error ≤±0.1kN
Flow value range	0~20mm, error ≤±0.05mm	0~20mm, error ≤±0.05mm
Platen speed	50±5mm/min	0~50mm/min adjustable
Interface	Equipped with serial output, network interface, connect to printer	Equipped with serial port output and networking interface (Networking function needs to be customized)
Power	≤600W, motor power 400W	1500W
Working voltage	AC220V±10%, 50Hz	AC220V±10%, 50Hz
Ambient temperature	0~60 C	0~60 C
Dimensions(mm)	430*650*900	500*760*1000
Weight	90kg	120kg

FIXTURES AVAILABLE FOR THE LOAD FRAME OF HTHY-0709/0710

The Marshall stability load frame can be equipped with different fixtures to meet different test requirements for Marshall, tack coat and SCB test, etc. This allows the load frame to play more roles in different tests, making it more cost-effective.

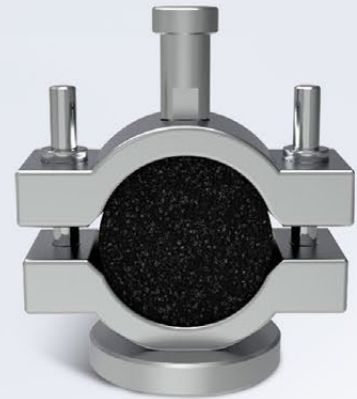
The Marshall stability test fixture is the standard configuration of HTHY-0709/0710, and the other fixtures are optional and need to be ordered separately.



Tack Coat Bond Strength Test (Tension Test) Fixture



Interlayer Bond Strength Test (Direct Shear Test) Fixture



Marshall Stability Test Fixture



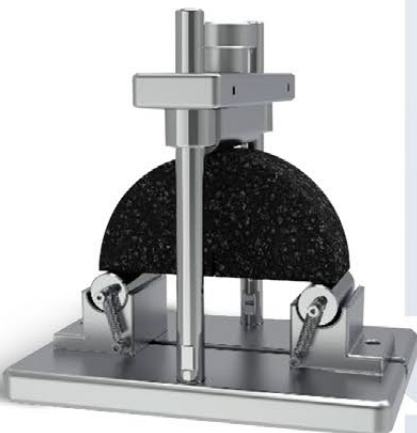
Tensile Splitting Test Fixture



Ideal Rutting Test Fixture



Bending Test Fixture



Semi-Circular Bend (SCB) Test Fixture

MARSHALL STABILITY TESTER