



TINENG

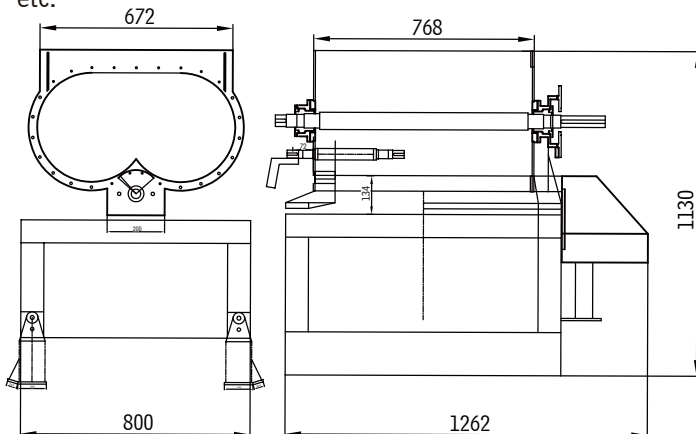
# DUAL SHAFT PADDLE MIXER TPTSM-200

The Dual Shaft Paddle Mixer TPTSM-200 is a fast mixer with high efficiency for mixing ingredients of different density & particle size. It adopts a dual-shaft paddle design and mixes in a gravity-less environment to ensure uniformity and consistency of the mixing effect. The main components of the mixer include mixing cylinder, double-shaft blades, transmission device and control system.



## APPLICATIONS

Dry mortar, Blended cements, Tile adhesives/grouting, Brick facings, Cement & Fibers, Flooring materials, Joint compounds, etc.



## FEATURES

- Short mixing time.
- High mixing uniformity.
- Large liquid addition range, and the maximum addition amount can reach 20%.
- Low power consumption, 60% lower than ordinary horizontal ribbon mixer.
- Equipped with wheels for easy movement.
- Different materials can be used according to user needs, to achieve a wider application.

## TECHNICAL SPECIFICATIONS

Total capacity	200L	Working capacity	120L
Paddles	8*2*2=32	Rotating speed	40rpm
Motor power	2.2kW	Discharge port	120*200mm
Dimensions	1260*800*1130mm		



SINCE 2006

ZHUOZHOU TIANPENG INSTRUMENT MANUFACTURING CO., LTD.  
Website: www.testmould.com Tel:+86-312-3852880