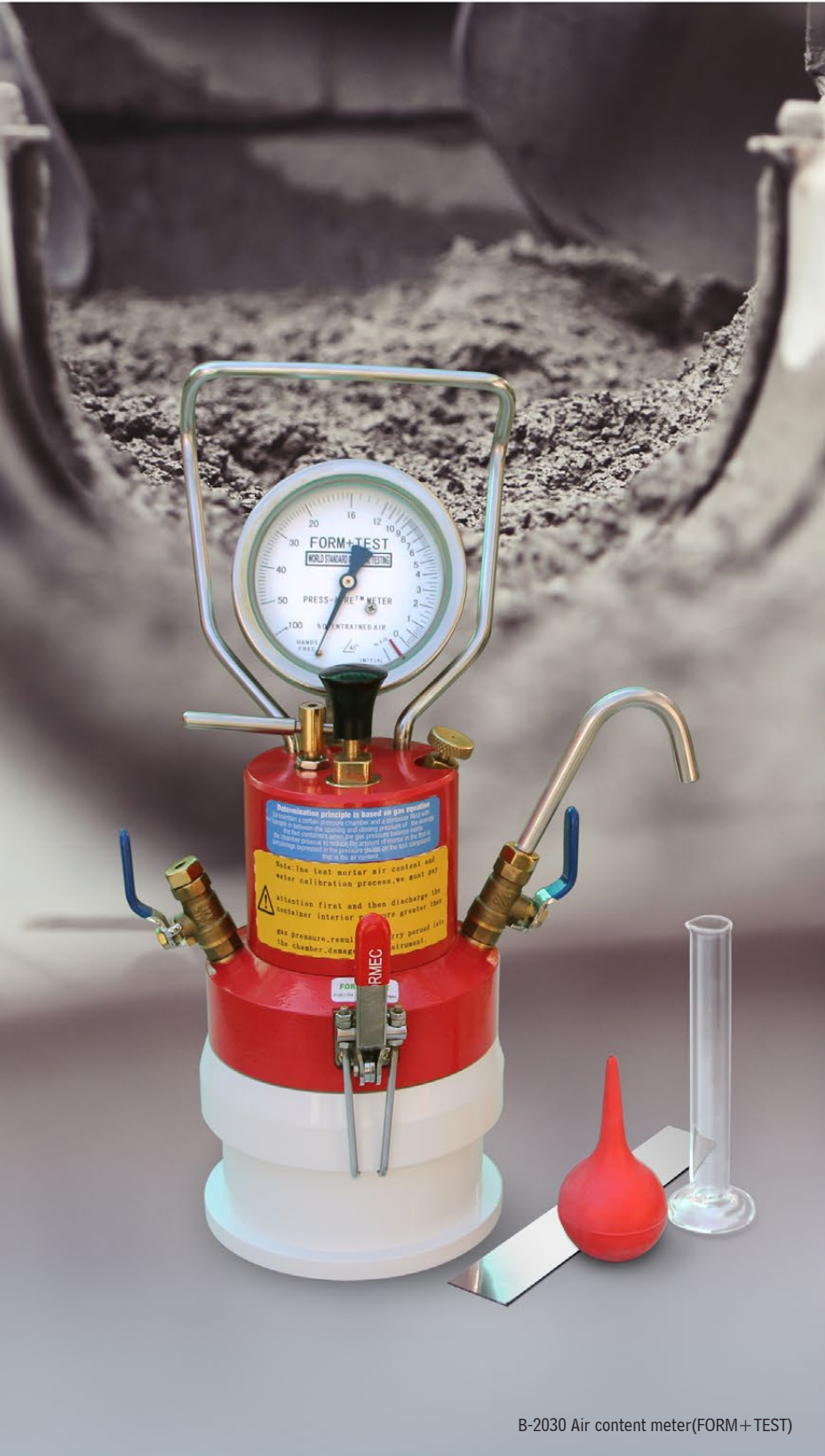




TINPENG

AIR CONTENT METER

STANDARD: EN 12350-7, BS 1881-106, ASTM C231



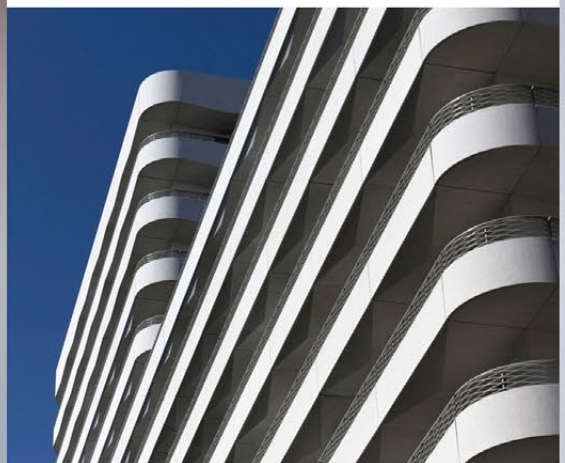
B-2030 Air content meter(FORM+TEST)

The Meter is the industry' s most popular kit for testing entrained air. Whether going into the ready mix truck or coming down the chute, it gives fast results. Always accurate. The kit contains everything needed to perform the test and — very importantly — to keep the unit in calibration.

It measures the air content in fresh mix concrete. The test procedure equalizes a known volume of air in the pressure chamber, with the unknown value of entrained air in the concrete-filled base. The amount of air entrained is then read on the meter' s gauge as the direct percentage (to the nearest 0.1%) of air entrained in the concrete. The test is based on Boyle' s law. Also known as “Type B” . See full Instructions or refer to ASTM. This modern meter utilizes the principle of Boyle's Law and consists of a flanged cylindrical vessel and cover assembly incorporating a pressure gauge air pump and valves. The base can also be used for unit weight measurement of fresh concrete and aggregates. Supplied complete with calibration set.

The air meter unit consists of 2 main parts: the base (measuring chamber) and the cover assembly. The cast aluminum base has machine-flanged rims. The interior surfaces of the base and surfaces of rims, flanges and other component parts are machined to facilitate frequent water clean-up. The unit is designed for easy disassembly in order to replace worn or damaged parts in the field.

The Super Pump is an important part of the Air Meter. It must be properly maintained to prevent air leakage. O-rings on the top of the pump and on the inside seal the unit. When the O-rings deteriorate, air can leak into the chamber and or debris can enter the pump.



SINCE 2006

ZHUOZHOU TIANPENG INSTRUMENT MANUFACTURING CO., LTD.

Website: www.testmould.com Tel:+86-312-3852880

Model	LC-615	LS-546	LA-0316	B-2030
Capacity (L)	7	1	7	1
Air content range	1-10%	0-20%	0-10%	0-50%
Accuracy	$\pm 0.1\%$ (1%-8% of air content); $\pm 0.2\%$ (8%-10% of air content)	$\pm 0.1\%$ (1%-8% of air content); $\pm 0.2\%$ (8%-12% of air content) $\pm 0.3\%$ (12%-20% of air content)	$\pm 0.1\%$ (1%-6% of air content); $\pm 0.2\%$ (6%-10% of air content)	$\pm 0.1\%$
Dimension(mm)	dia. 330 x 500	dia. 200 x 320	dia. 330 x 500	dia. 200 x 320
Weight(Kg)	10	4	10	4



LC-615 Air content meter(SANYO)



LS-546 Air content meter



LA-0316 Air content meter(FORNEY)