

ASPHALT MIX ANALYZER



HTHY-8159

STANDARD: EN12697-1, ASTM D8159

This equipment is mainly used for extracting and separating asphalt, mineral powder from asphalt mixtures, and rubber particles in rubber asphalt(HTHY-8159A only). Asphalt can be recovered while calculating the asphalt content. The performance of recover asphalt is evaluated by subsequent relevant tests, so as to provide data support for the recovering of asphalt mixtures.

The equipment consists of cleaning system, centrifugal system, drying system and extraction system. The entire extraction and separation process is completed in a closed system, which is environmentally friendly and avoids direct contact between the operator and the solvent.



HTHY-8159A

SINCE 2006

ZHUOZHOU TIANPENG INSTRUMENT MANUFACTURING CO., LTD.
Website: www.testmould.com Tel: +86-312-3852880

FEATURES

- Computer control and display, users can choose soaking time, cleaning and drying cycle according to their needs.
- Real-time display of ongoing process and time.
- High extraction efficiency, the entire extraction process can be completed within 1 hour.
- Can be used for the extraction of rubber-asphalt mixtures.(HTHY-8159A only)
- The extraction process is completed in a closed system, and the solvent loss is small.
- The cleaning chamber has a heating function and is equipped with an ultrasonic device to accelerate the dissolution of asphalt, making the cleaning process more efficient.
- An observation window is installed at the inlet of the centrifuge, which can check the color of the mixture in real time.
- The rotation speed of the centrifuge is not less than 8000r/min, and the separation of mineral powder is more thorough.
- The drying system can dry the aggregate and mineral powder, which is convenient for calculating the asphalt content.
- The collected aggregate can be further sieved.
- The distillation system consists of a mixed liquid silo, a solvent silo and a cooling device.
- The Asphalt Vacuum Rotary Evaporation Test Sampling System can be set to soak for 3-30 minutes before the start of the cleaning cycle and directly extract the asphalt mixture sample.
- Equipped with cooling equipment, the cooling effect is better than the traditional tap water cooling method, and water resources are saved.
- Can be equipped with electric rotary evaporator (optional).

TECHNICAL PARAMETERS

Model	HTHY-8159A	HTHY-8159
Maximum sample weight	Conventional Asphalt Mixture 3.5Kg	Conventional Asphalt Mixture 3.5Kg
	Rubber Asphalt Mixture 1.5Kg	/
Centrifuge speed	Not less than 8000r/min	Not less than 8000r/min
Centrifuge cup capacity	Less than 300g	Less than 300g
Distillation capacity	Main heater 10L/h	Main heater 10L/h
	Main heater + auxiliary heater: 35L/h	Main heater + auxiliary heater: 35L/h
Power supply	380V 50HZ, 5.5KW	380V 50HZ, 5.5KW
Dimensions	1300 x 800 x 1700 mm	1300 x 800 x 1700 mm
Weight	200kg	200kg



Washing drum



Lining paper
for centrifuge cup



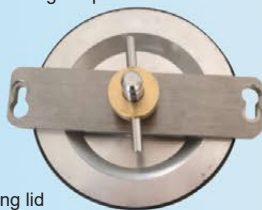
Centrifuge cup fixture



Balance stand



Centrifuge cup



Closing lid
for washing drums



Filling funnel



ACCESSORIES

Item	Quantity	Model	
		HTHY-8159A	HTHY-8159
Electric rotary evaporator	1set	Optional	Optional
Water-sealing vacuum pump	1set	Optional	Optional
Chiller	1	Optional	Optional
Washing drum	Opening 0.075 mm	√	√
	Opening 0.063 mm	√	√
	Opening 0.090 mm	√	√
Closing lid for washing drums	1	√	√
Centrifuge cup	φ120mm/200g	√	√
	φ120mm/300g	√	√
Lining paper for centrifuge cup	1	√	√
Balance stand	1	√	√
Filling funnel	1	√	√
Centrifuge cup fixture	1	√	√
Balance	1	√	√
Printer	1	√	√
Drainer	1set	√	√
Cooling water pipe, 6m	1	√	√
3M Gas Mask	2	√	√
Heat insulation gloves	2pairs	√	√
Rubber powder mixture washing chamber	Washing bucket, 0.075mm	√	×
	Rubber collector, 0.075mm	√	
	Washing motor	√	
	Agitator	√	
	Transfer handle	√	