

## END-OVER-END SHAKER TPES-2

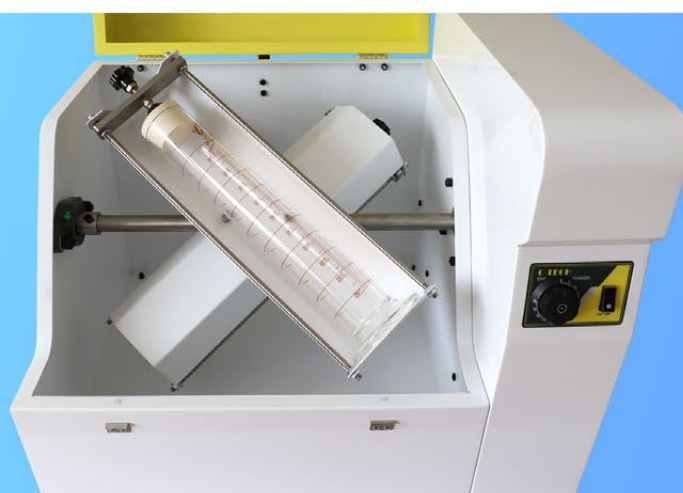
### STANDARD: BS1377-2

The End-Over-End Shaker TPES-2 is used for the determination of the particle density of soils by the gas jar method. This method applies for soils containing up to 10% of particles retained on a 37.5 mm sieve.

It mainly consists of a motor reducer, rotates two 1L capacity gas jars with rubber covers at about 50 rpm. For quiet operation it integrates a soundproof cabinet.

### TECHNICAL SPECIFICATIONS

Speed	50rpm
Gas jar	1L*2
Power	370W
Power supply	220V
Dimensions	760*640*600mm
Weight	58kg



**SINCE 2006**

**ZHUOZHOU TIANPENG INSTRUMENT MANUFACTURING CO., LTD.**  
 Website: [www.testmould.com](http://www.testmould.com) Tel: +86-312-3852880