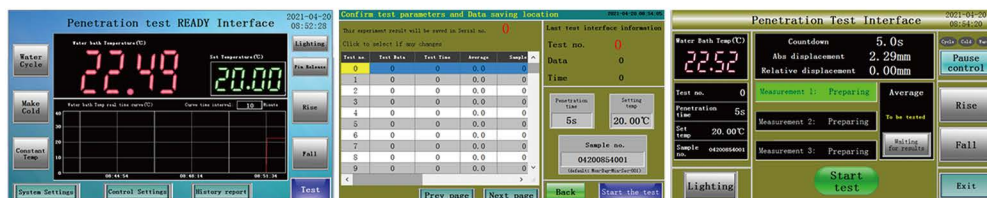


AUTOMATIC PENETROMETER CT-A1000

TOUCH SCREEN



Intuitive display

Rich content

Easy operation

INTERNAL INTEGRATED CONSTANT TEMPERATURE SYSTEM

Semiconductor refrigeration technology +PID control algorithm

It integrates semiconductor refrigeration sheet, cooling module, heating sheet and water circulation system to realize the $\pm 0.1^{\circ}\text{C}$ high-precision constant temperature water bath environment control.

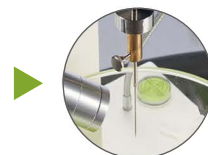
QUICK NEEDLE ADJUSTMENT

The stepping motor drives the lead screw slider to realize the high-precision jogging adjustment of fast lifting. ▶

Knob encoder switch + lifting switch. ▶

Professional standard needles Needle bar assembly

The standard needles are provided by designated professional special needle manufacturers, and are regularly sent to third-party for verification. The quality of the needles strictly meets the specification requirements of $2.5 \pm 0.05\text{g}$.



POWERFUL DATA PROCESSING CAPABILITY

Calculate the penetration index PI, equivalent softening point T800 and equivalent brittle point T1.2 according to the test results. Intelligently analyze the results and prompt the user.

Data uploaded online. The device comes with a 485 interface (ModBus protocol), which can realize real-time data networking.

SPECIFICATIONS

Measuring range	0~450 penetration
Constant temperature water bath	Temperature measuring range: $0.00 \sim 50.00^{\circ}\text{C}$
	Temperature control range: Low temperature: 15°C lower than ambient temperature;
	High temperature: 50.00°C
	Resolution: 0.01°C
Time control	Temperature control accuracy: $\pm 0.1^{\circ}\text{C}$
	0-60 seconds (arbitrary setting)
Displacement control	Adopting high-precision LVDT displacement sensor, split structure, no friction when the needle bar falls.
	Measuring range: 0-50mm
	Resolution: 0.01mm (0.1 Penetration)
Data storage	Relative displacement accuracy: $\leq \pm 0.1\text{mm}$
	200 groups
Dimensions	390mmx 310mm x575mm(length×width×height)

SINCE 2006

ZHUOZHOU TIANPENG INSTRUMENT MANUFACTURING CO., LTD.
Website: www.testmould.com Tel: +86-312-3852880