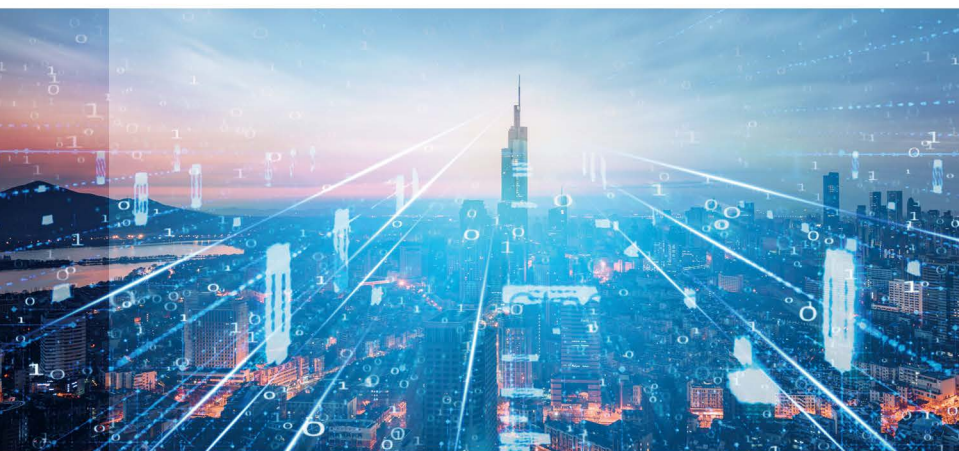


MULTI-ELEMENT XRF ANALYZER KL6800/KL3300

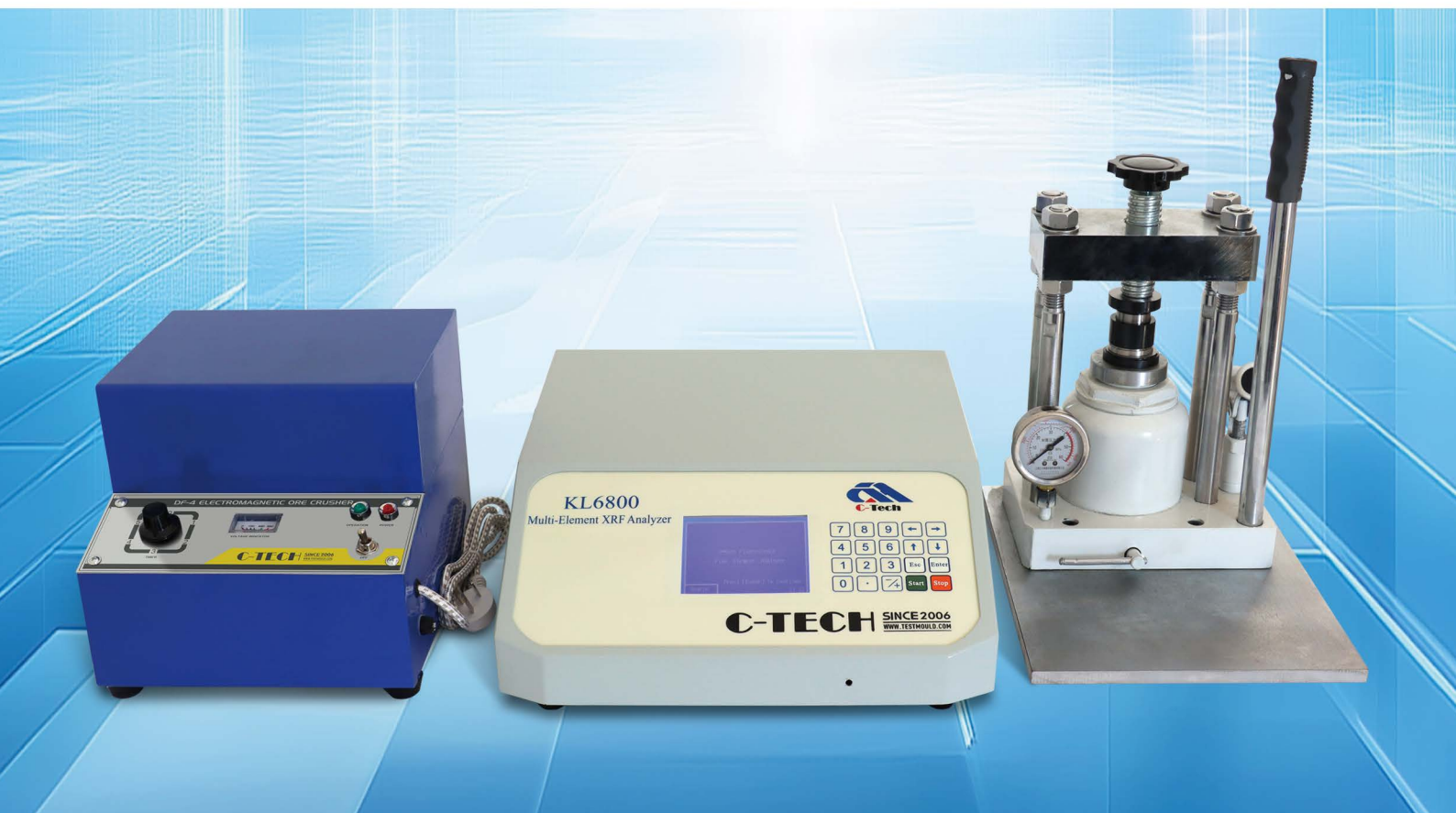


Multi-Element XRF Analyzer is a new type of computerized desktop analyzer, specially developed for the cement building materials industry. Using advanced physical measurement method, it can accurately and quickly analyze the content of Ca, Fe, S and other elements in raw material, clinker, and cement, and automatically calculate KH, SM, IM.

The instrument can be used independently, and can also sent the analysis results to the computer batching system through the RS232 serial communication port.

APPLICATION

- ⊙ KL6800 is mainly used to determine the CaO%, Fe₂O₃%, SiO₂%, Al₂O₃% in raw material and clinker, and quickly provide analytical data for raw material ratio and clinker rate value.
- ⊙ KL3300 is mainly used to determine the CaO%, Fe₂O₃% in raw material, and quickly provide analytical data for raw material ratio.
- ⊙ KL6800 and KL3300 are used to determine CaO% and SO₃% in cement, and to provide analytical data for admixture content.
- ⊙ KL6800 is also used to analyze CaO%, Fe₂O₃%, SiO₂%, Al₂O₃%, SO₃% in limestone, clay, gypsum, kaolin, refractory materials and other materials, and provide quality data for incoming raw materials.
- ⊙ Directly connected with the computer control system of raw material rate value batching through the RS232 serial communication port.



SINCE 2006

ZHUOZHOU TIANPENG INSTRUMENT MANUFACTURING CO., LTD.
 Website: www.testmould.com Tel: +86-312-3852880

MULTI-ELEMENT XRF ANALYZER KL6800/KL3300



FEATURES

- Integrated desktop instrument, compact structure, beautiful appearance.
- Large-screen LCD display, easy to use.
- Short analysis time: determine the elements in the material in a short time.
- Samples are not destroyed during analysis, and samples can be tested repeatedly.
- No chemical reagents, no three wastes, no radioactive sources, low power consumption, in line with environmental protection, energy saving, radiation safety requirements.
- The data storage space is large, and the content results and instrument self-test data can be queried.
- Strong adaptability to the environment and high reliability.

TECHNICAL SPECIFICATIONS

Model	KL3300	KL6800
Analysis range	CaO, Fe ₂ O ₃ , SO ₃ : 0.01%~100%	CaO, Fe ₂ O ₃ , SiO ₂ , Al ₂ O ₃ , SO ₃ : 0.01%~100%
Analysis width	SO ₃ (CaO, Fe ₂ O ₃)%max~SO ₃ (CaO, Fe ₂ O ₃)%min≤15%, select the working range by calibrating the working curve.	CaO, Fe ₂ O ₃ , SiO ₂ , Al ₂ O ₃ , SO ₃ : ≤5%, for example, in raw material, CaO%: 39.50%~44.50%, Fe ₂ O ₃ %: 0.01%~5.00%, SiO ₂ %: 10.00%~15.00%, Al ₂ O ₃ %: 0.00%~5.00%, selected by calibration working curve.
Analysis accuracy	Standard deviation S _{SO3} ≤ 0.04%; S _{CaO} ≤0.10%; S _{Fe2O3} ≤ 0.05%;	Standard deviation S _{CaO} ≤0.10%; S _{Fe2O3} ≤ 0.05%; S _{SiO2} ≤0.07%; S _{Al2O3} ≤0.07%; S _{SO3} ≤0.05%
Allowable error	ΔCaO %≤0.25; ΔFe ₂ O ₃ %≤0.15%; ΔSO ₃ %≤0.15%	ΔCaO %≤0.25; ΔFe ₂ O ₃ %≤0.10%; ΔSiO ₂ %≤0.20%; ΔAl ₂ O ₃ %≤0.20%; ΔSO ₃ %≤0.15%
Analysis time	n * 30 seconds (n is a natural number from 1 to 5, usually n = 2)	n * 90 seconds (n is a natural number from 1 to 5, usually n = 2)
Stability	Absolute drift: ΔCaO% ≤0.10%; ΔFe ₂ O ₃ % ≤0.10%; ΔSO ₃ % ≤0.10%	Absolute drift: ΔCaO% ≤0.15%; ΔFe ₂ O ₃ % ≤0.10%; ΔSiO ₂ % ≤0.10%; ΔAl ₂ O ₃ % ≤0.10%; ΔSO ₃ % ≤0.10%
Working condition	Power supply: AC200V~240V, 50Hz; ambient temperature: 5~40℃; relative humidity: ≤85%(30℃)	Power supply: AC200V~240V, 50Hz; ambient temperature: 5~40℃; relative humidity: ≤85%(30℃)
Overall power consumption	≤30W	≤30W
Dimensions and weight	468mm * 368mm * 136mm, 13.8Kg	468mm * 368mm * 136mm, 13.8Kg