

Application

Application for quickly and accurately detection, positioning, evaluation and diagnosis of various flaws in the work-piece, such as cracks, welds, blowhole, etc. It Widely used in electric power, petrochemical, boiler and pressure vessel, steel, military, aerospace, railway transportation, automobiles, machinery, and other fields.

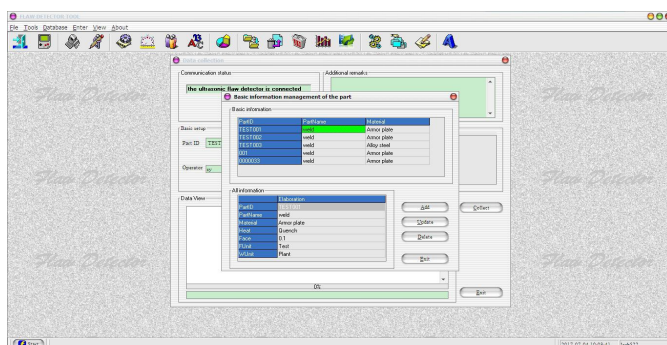
Functions & Features

- ❖ IP65 standard, with the durable metal shell (oil-proof, water-proof and dust-proof)
- ❖ PC software is available for data analysis, management and reports printing
- ❖ Probe automatic calibration
- ❖ DAC and AVG are automatically formed, and can be corrected and compensated
- ❖ Freely switch to four kinds of standards (depth D, level P, distance S, amplitude H)
- ❖ Functions such as Auto-gain and peak memory improve detection efficiency
- ❖ Automatically calculate the ϕ value equivalent defects
- ❖ 13 built-in testing standards are available
- ❖ Storage: 500-1000 pieces of A-scan images and data
- ❖ Power supply: rechargeable Li-ion battery, standby time more than 15hours
- ❖ The width and intensity of launch pulse are adjustable
- ❖ 3 years warranty and life-long services.

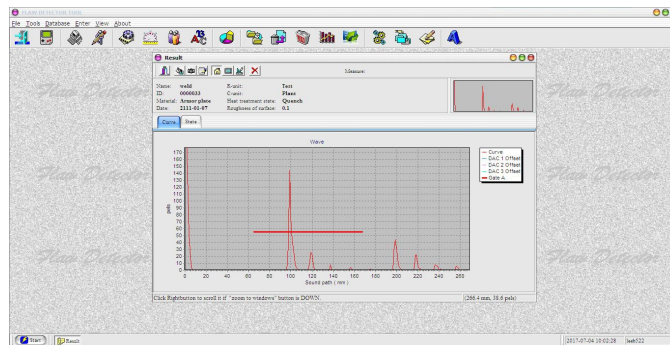
Parameters

Model	Uee952	Uee953
Operating Frequency	0.2MHz ~ 20MHz	0.2MHz ~ 20MHz
Scan Range(mm)	0-6000mm	0-10000mm
Velocity Range (m/s)	1000 ~ 15000	100 ~ 20000
Gain Range(dB)	0~110	0~130
Vertical linearity error	≤3%	≤3%
Dynamic Range	≥32dB	≥35dB
Horizontal linearity error	≤0.2%	≤0.2%
Testing sensitivity	≥62dB (Depth 200mm, Φ2 flat bottom hole)	≥65dB (Depth 200mm, Φ2 flat bottom hole)
Pulse Repetition Frequency	10~1000Hz	10~1000Hz
Pulse amplitude	100V~500V	100V~500V
Measuring channel	100	500
Storage	500	1000
PC Connection	●	●
TCG curve	○	●
B Scan	○	●
AWS	○	●
Dimension	240×185×55mm	
Weight	1.85kg	
Standard Probes	Straight probe: 2.5MHz, diameter 20mm, cable Q9-Q9 Angle probe: 4MHz, 60 degree, 8*9 mm, cable Q9-C5	
Optional Accessories	Optional probes, Cables, Calibration blocks, Coupling agent	

Pictures



Data Management



Measuring Display

Standard Configuration

Name	Quantity	Name	Quantity
Main unit	1	PC software	1
Straight probe	1	USB	1
Angle probe	1	Manual	1
Power adapter	1	Certificate	1
Cables	2	Warranty card	1

Accessories

Different Cables for Probes



Standard Probes

