

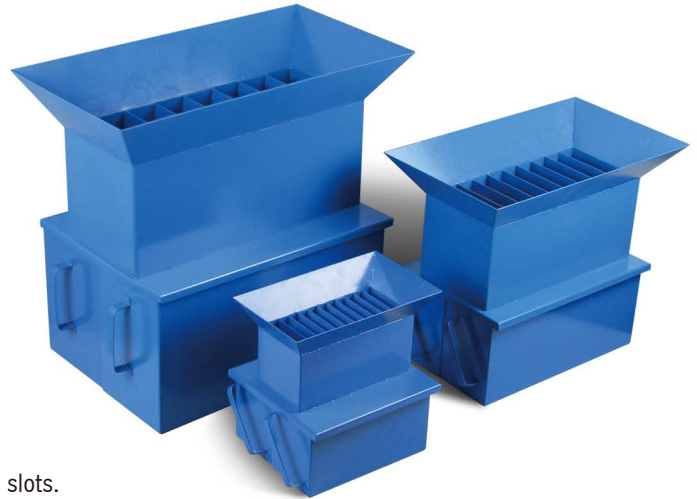
RIFFLE BOXES (SAMPLE SPLITTER) 23 SERIES

STANDARD: EN 932-1, EN 932-2, ASTM C702



For the rapid preparation of samples, i.e. division into two representative portions. Detailed below is a range of dividers, each constructed of heavy gauge sheet metal, with particular attention given to reinforcement of the partitions to maintain the accuracy of the slot dimensions.

The units offered are supplied in a range of sizes from 7 mm to 64 mm slots. Supplied complete with 3 metal pans.



Model	Max particle size (mm)		Slot width (mm)	No. of slots	Approx. capacity(kg)
	BS	EN			
23-3000	4.5	3.5	7	12	0.3
23-3050	8.5	6.5	13	12	2.0
23-3070	10.0	7.5	15	12	2.0
23-3100	12.5	9.5	19	10	4.0
23-3150	16.5	12.5	25	10	4.0
23-3170	20.0	15	30	10	4.0
23-3200	25.0	19	38	8	11.0
23-3300	33.0	25	50	8	14.0
23-3350	42.5	32	64	8	18.0

LARGE CAPACITY SAMPLE SPLITTER CT0320

STANDARD: ASTM C702, EN 9221, UNI 8520

Sample Splitter very sturdily constructed with cadmium coated plated for rust protection. It is designed for the reduction of test sample which are too large in volume.

It handles any material from size up to 108 mm. Each chute bar is 1/2" wide. The opening start from 1/2", 1", 1 1/2", 2", 3" & 4" are possible.

Dimensions: 460 (L) x 723 (W) x 958 (H) mm
Approx. Weight: 60 kg

