

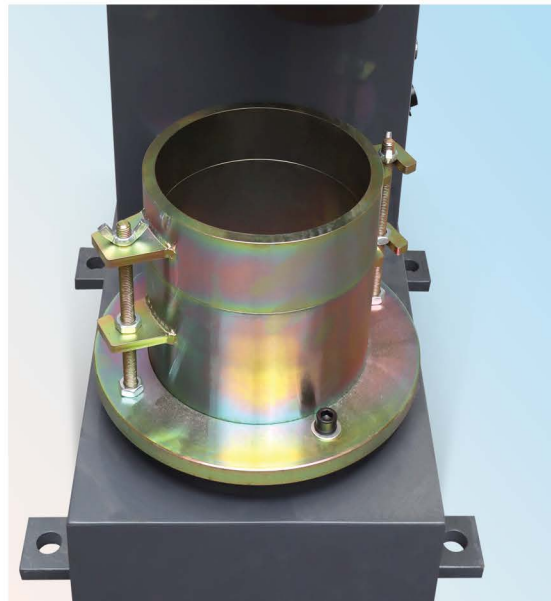
MULTIFUNCTIONAL COMPACTOR EDC-1

It is suitable for the foundation engineering construction such as water conservancy dam, traffic, railway, airport and building etc. With standard compaction method to determine the relationship between density and water ratio, then confirm the dry density and moisture content of soil. It could satisfy the specimen preparation requirements of CBR tests and resilience modulus tests.

It could provide sand module and spodosol module of dia. 152.4 and 101.6 mm. It could perform light compaction and heavy compaction. The controller adopts a combination of touch screen and physical buttons, which makes the display clearer and the operation more convenient. With perfect designation, it has lots of specialties such as digital display, auto counting and auto circulation etc.

TECHNICAL SPECIFICATIONS

Heavy-duty compacting test	Hammer weight 4.5kg / Drop height 450mm
Light-duty compacting test	Hammer weight 2.5kg / Drop height 300mm
Specimen cylinder dia.	Dia. 152.4 and 101.6 mm
Hammer head dia.	Dia. 50 mm
Compacting speed	30 times/min
Power	370W, 220V, 1400r/min
Dimensions	650×400×1320 mm
Weight	130 Kg





◀ VIBRATION COMPACTION HAMMER 33-T8701

STANDARD: BS 1377:4, BS 1924:2, EN 13286-4

Used for the compaction of Proctor and CBR soil specimens. Using the appropriate tamping foot it can also be used for compacting asphalt in the "Percentage refusal density test".

Small tamping foot	Dia. 102 mm.
Large tamping foot	Dia. 146 mm
Shank	300 mm long
Full load impact rate	2800 bpm
Power supply	230 V, 50-60 Hz, 1 ph
Power	950 W
Overall dimensions	130x530x380 mm
Weight approx.	6.4 kg

Moulds need to be ordered separately.

PROCTOR MOULDS ▼

Used for determining the relationship between the moisture content and density of compacted soil. Made of plated steel. Includes collar, mould body and base plate.

Different models are available conforming to the various specifications in use. They are identical in shape and slightly differ in diameter and capacity.

Model	Int. dia. (mm)	Body height (mm)	Weight approx. (kg)
ASTM models			
33-T0070	101.6	116.4	7
33-T0071	152.4	116.4	9
33-T0073	152.4	116.4	9.5
EN models			
33-T0070/E	100±1	120±1	5
33-T0071/E	150±1	120±1	8.9



PROCTOR RAMMER ▶

Used to compact the soil sample in the Proctor moulds. Made of plated steel. Guide sleeve with vent holes. Different models are available conforming to the various specifications in use.

Model	Rammer dia. (mm)	Free fall height (mm)	Weight approx. (kg)
ASTM models			
33-T0075	50.8	305	3
33-T0076	50.8	457.2	5.3
EN models			
33-T0075/E	50.0±0.05	305±3	3.6
33-T0076/E	50.0±0.05	457±3	6.3

